

# W4C

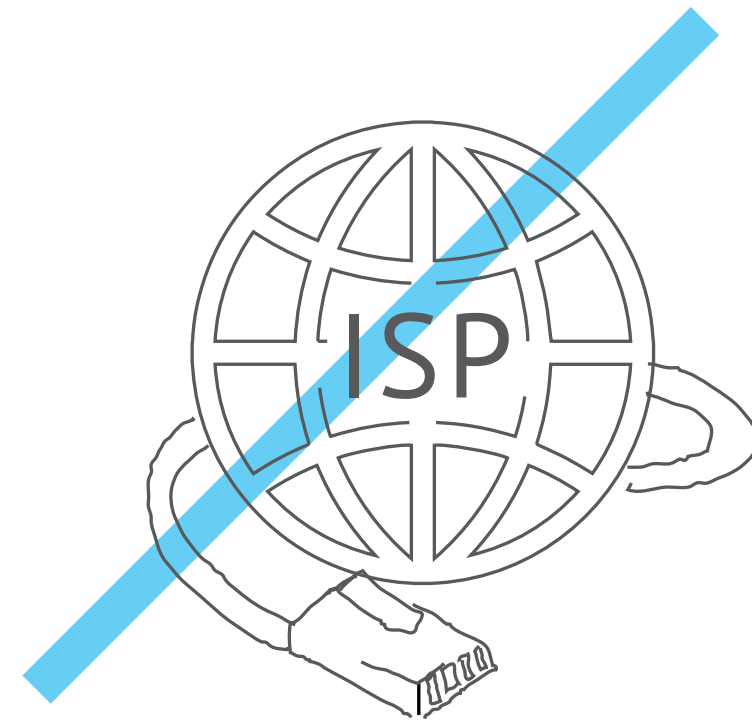
WIRELESS FOR COMMUNITIES

---

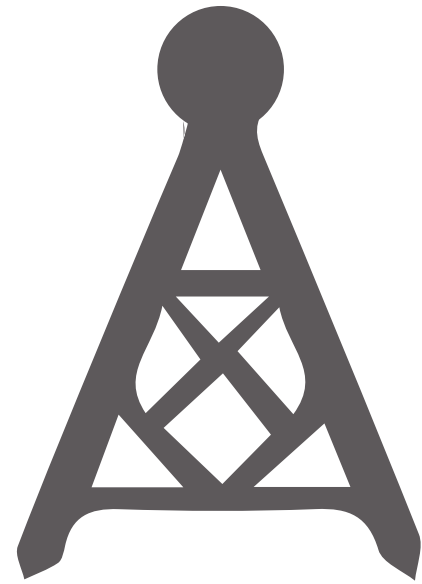


FORD  
FOUNDATION

Connects rural and remote locations of India

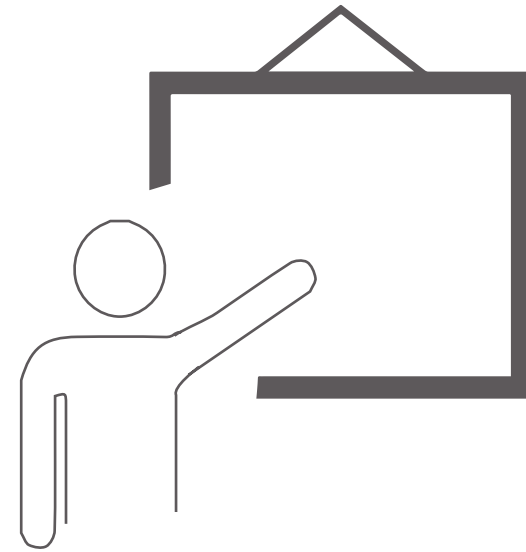


# SERVICES

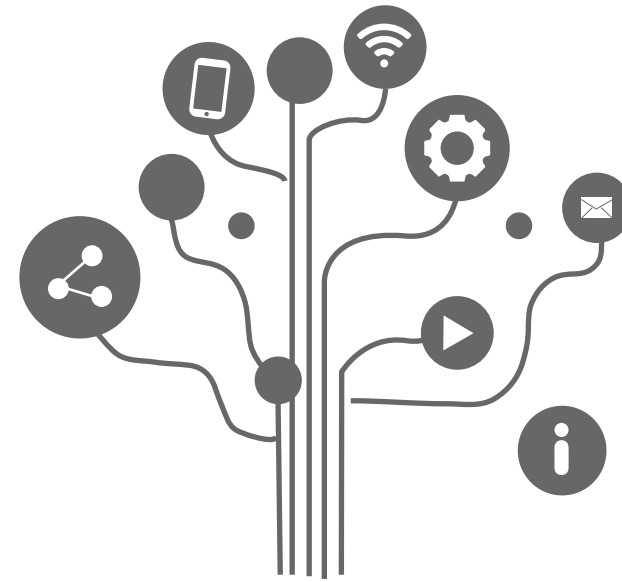


Wireless set-up

2.4 GHz and 5.8 GHz  
free spectram bands



Management  
training  
programmes



Digital  
literacy  
programmes



Entrepreneurship  
programmes

# APPROACH



Availability

Affordability

Acceptability

Accessibility

# DEVELOPMENT AGENDA

# AHEAD

Awareness

Health

Education

Activating  
entrepreneurship

Delivery of  
e-Governance

# A

Awareness

Awareness building  
about social rights,  
services and laws  
like RTI



Health

Connecting primary  
health centres to  
distric hospitals

Enabling access to  
health-related  
information



Education

Education for  
school dropouts,  
access to online  
tutorials and distant  
learning courses



A

Activating Entrepreneurship

Enabling community  
members to set up  
e-commerce sites  
and enterprises

Delivery of e-Governance

D

Facilitating coordination between local authorities & governments, expediting delivery of public services and enhancing state transparency and accountability

# PROCESS



1

Baseline survey,  
network feasibility study  
& implementation plan



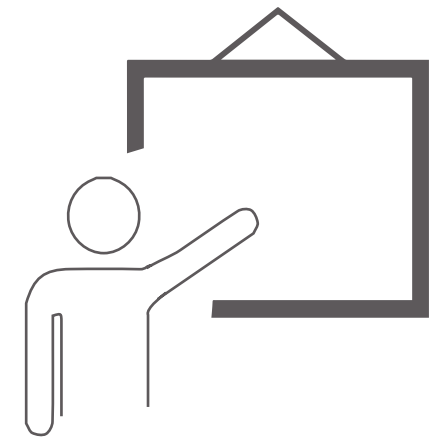
2

Implementation of  
wireless network



3

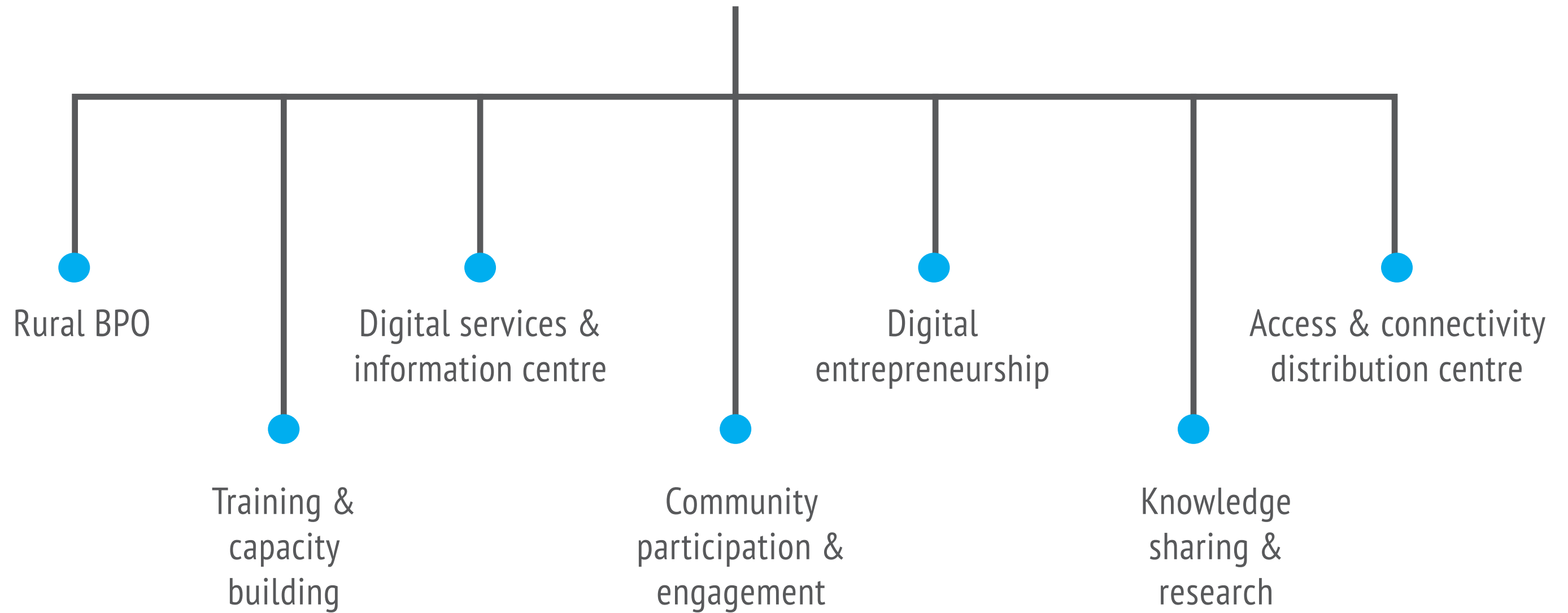
Testing & onitoring



4

Training & capacity  
building

# SUSTAINABILITY



# IMPACT & OUTCOME



Schools



Panchayats



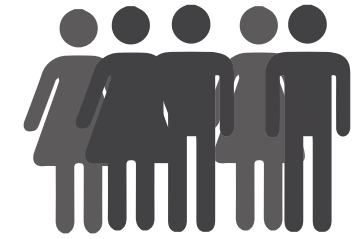
Health centres



Individual households

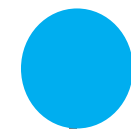


Micro-  
enterprises



Community centres

# TIMELINE

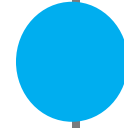


2010

Inception of  
W4C project

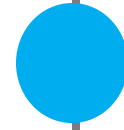
Reached to 3 more locations in Tura in Meghalaya, and Baran and Tilonia in Rajasthan

2011



Conducted training programme in Bangladesh & Bhutan

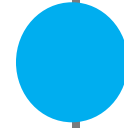
2012



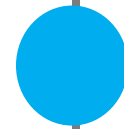
Reached to 8 locations; built a unique **200-kilometre wireless network** for the Sahariya tribe in Baran district of Rajasthan. Connected **10 centres** located within a range of 40 kilometre

A big wireless network established in Guna with support from Ford Foundation, connecting more than **100 node users**

2013



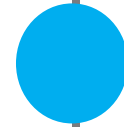
2014



Wireless network becomes a strategic tool across 150 locations in 22 states

Building expertise in wireless technology; promoting the idea of rural ISP or community ISP; establishing new social enterprise called VOIN (Villages of India Network)

2015



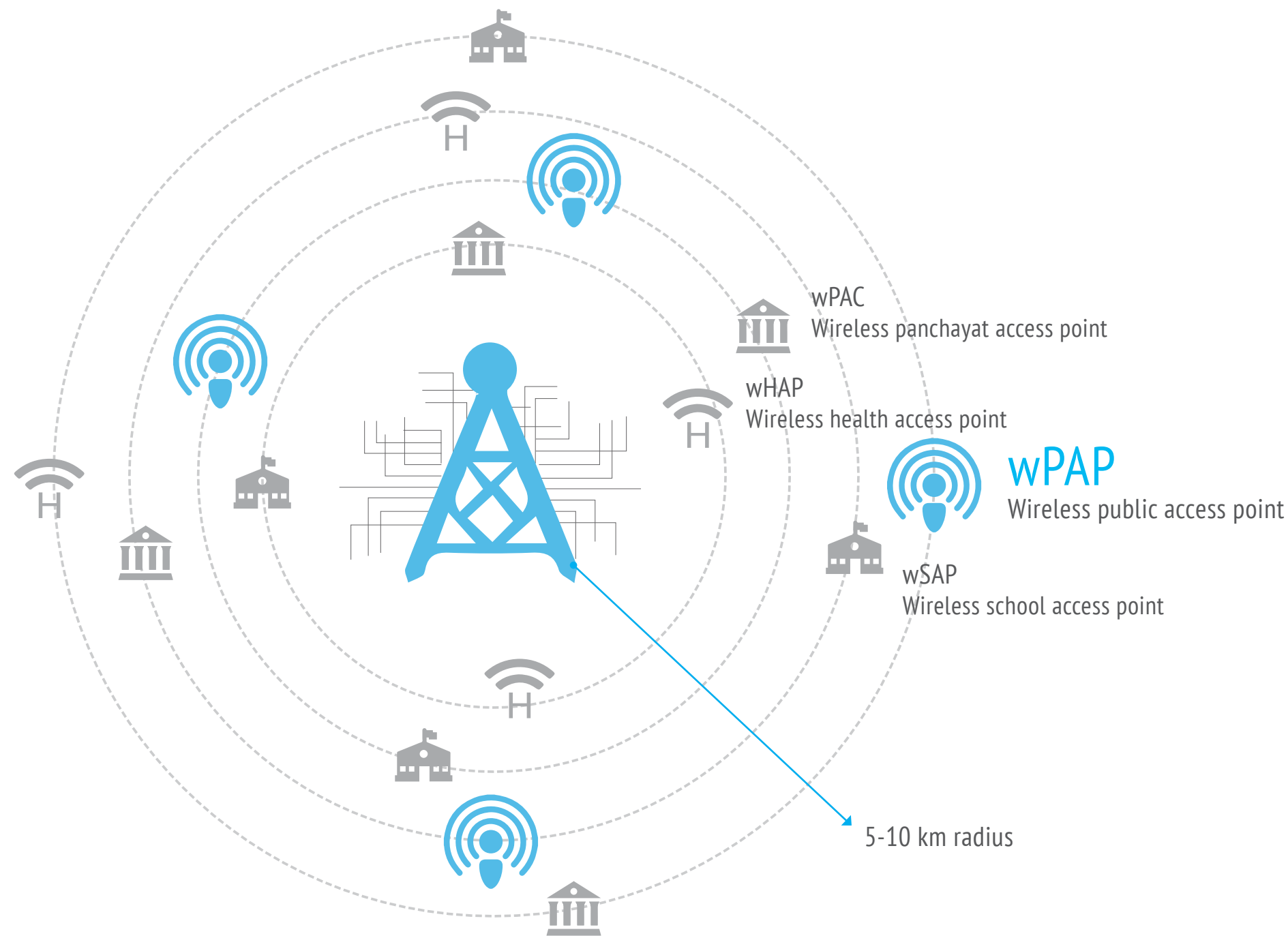
2016

Applied for ISP in Madhya Pradesh

Further providing last mile connectivity –  
Uttar Pradesh; Tamil Nadu; Orissa;  
Madhya Pradesh; Rajasthan



# WIRELESS ECOSYSTEM



Outreach of digital literacy

1. Educators
2. Students
3. SHGs
4. Women
5. Entrepreneurs
6. Local NGOs
7. Staff
8. Panchayat members



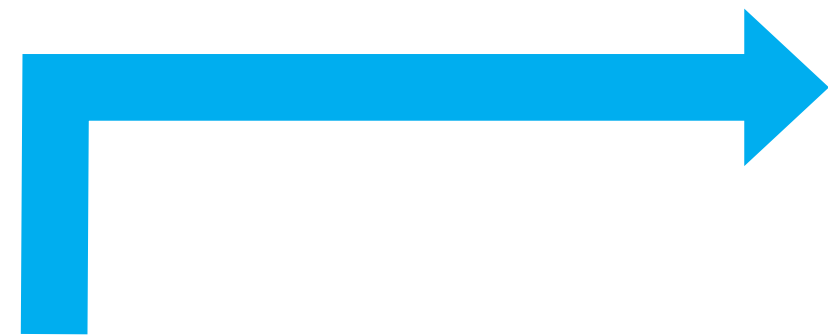
Providing access connects

1. Individuals
2. Households
3. Institutions
4. SHGs
5. Micro Enterprises



Services

- 1. Digital literacy centre
- 2. Design room
- 3. Information, entitlement service centre
- 4. Museum
- 5. Digital service centre



W4C

VOIN

A social enterprise  
for enabling wireless  
for communities